

# Mounting accessories and tools

## Control panel installation



### Properties

- The developed snap-fit socket with fully-protected wire connections and integrated snap connection enables a simple and quick installation in the control cabinet.

| Part-No.              | Type           | Description  | Nominal voltage range | Number of terminations | Voltage V | Colour    | weight approx. kg/100 piece | VE piece |
|-----------------------|----------------|--|-----------------------|------------------------|-----------|-----------|-----------------------------|----------|
| <b>Socket ST 3/S</b>  |                |  |                       |                        |           |           |                             |          |
| 680572                | ST-3/S         | Socket ST-3/S<br>VDE approval  | DC 10A / AC 16A       | 2                      | 250       | grey      | 6.20                        | 10       |
| 680576                | ST-3/S         | Socket ST-3/S<br>VDE approval  | 10/16 A               | 2                      | 250       | yellow    | 6.20                        | 10       |
| <b>Socket ST 3/A</b>  |                |  |                       |                        |           |           |                             |          |
| 680571                | ST-3/A         | Socket ST-3/A<br>with switch indicator (green glow lamp)<br>VDE approval | 10/16 A               | 2                      | 250       | grey      | 6.20                        | 10       |
| <b>Socket ST 3/F</b>  |                |  |                       |                        |           |           |                             |          |
| 680573                | ST-3/F         | Socket ST 3/F<br>French design   | 10/16 A               | 2                      | 250       | grey      | 6.30                        | 10       |
| <b>Socket ST 3/4</b>  |                |  |                       |                        |           |           |                             |          |
| 680650                | ST-3/4         | Socket ST-3/4<br>4-way socket, snap-fit                                  | 10/16 A               | 2                      | 250       | grey      | 20.00                       | 5        |
| <b>Adapter</b>        |                |  |                       |                        |           |           |                             |          |
| 680574                | ST3/SEV TYP 13 | Adapter ST3/SEV Type 13,<br>suitable for ST-3/S, ST-3/A, ST-3/4.         | 10/16 A               | 2                      | 250       | grey      | 6.00                        | loose    |
| <b>Socket 2x RJ45</b> |                |  |                       |                        |           |           |                             |          |
| 680500                | 2x RJ45        | Socket 2x RJ45<br>Cat. 5, snap-fit                                       |                       | 2x8                    |           | aluminium | 15.00                       | 5        |

# Mounting accessories and tools

## Control cabinet installation Neozed built-in fuse block ESS



### Application

- Snap on connection to mounting rails according to DIN EN 50022.
- Suitable for amperages up to 63 amperes.
- Nominal voltage AC 380 V, DC 250 V.
- Through use of the comb rail KAS the wiring becomes more rational.
- It corresponds to DIN 49524 and VDE 0636.
- Protection against contact according to VGB 4.

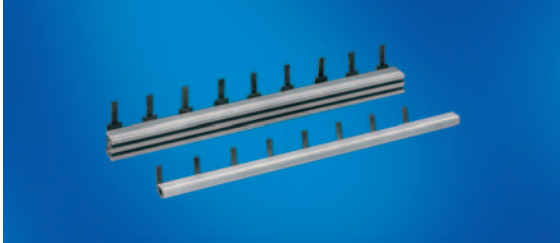
### Properties

- The ESS fuse block offers optimal protection against contact with current-carrying parts
- The closed box form enables secure wiring and operation of the socket
- Through the frame terminals, simple connection with flexible wires up to 25 mm<sup>2</sup> is possible
- Even under temperature fluctuations, the spring supported base contact creates a secure and constant connection
- Thus a self-loosening of the screw cap is prevented
- Through the use of the ESS fuse block, time and costs in machine and plant construction can be saved

| Part-No.                              | Type    | Width mm | Height mm | Depth mm | Nominal voltage range | Number of terminations | thread | max. connection mm <sup>2</sup> | weight approx. kg/100 piece | VE piece |
|---------------------------------------|---------|----------|-----------|----------|-----------------------|------------------------|--------|---------------------------------|-----------------------------|----------|
| <b>Neozed built-in fuse block ESS</b> |         |          |           |          |                       |                        |        |                                 |                             |          |
| 680581                                | ESS 316 | 81.0     | 80.0      | 60.0     | 16 A                  | 3                      | E 14   | 25                              | 38.40                       | 3        |
| 680585                                | ESS 163 | 27.0     | 80.0      | 60.0     | 63 A                  | 1                      | E 18   | 25                              | 13.20                       | 9        |
| 680586                                | ESS 363 | 81.0     | 80.0      | 60.0     | 63 A                  | 3                      | E 18   | 25                              | 39.60                       | 3        |
| 680580                                | ESS 116 | 27.0     | 80.0      | 60.0     | 16 A                  | 1                      | E 14   | 25                              | 12.80                       | 9        |
| <b>Screw cap ESS-SK</b>               |         |          |           |          |                       |                        |        |                                 |                             |          |
| 680578                                | SK 16   |          |           |          | 16 A                  |                        | E 14   |                                 | 1.00                        | 20       |
| 680579                                | SK 63   |          |           |          | 63 A                  |                        | E 18   |                                 | 1.40                        | 20       |

# Mounting accessories and tools

## Control cabinet installation comb rails KAS



### Properties

- Bar design 975 mm long, bar distance 27 mm, suitable for the contact-protected built-in fuse block ESS

### Technical data

Amperage range

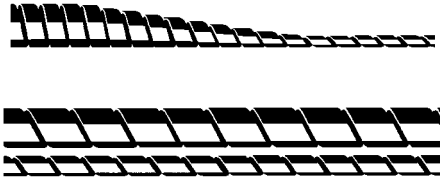
at 35°C ambient temperature and  
centre supply:  
with 10 mm approx. 80 A  
with 16 mm approx. 120 A

| Part-No.             | Type    | Nominal voltage range | Connection | max. connection mm <sup>2</sup> | Cu application weight kg/100 piece | weight approx. kg/100 piece | VE piece |
|----------------------|---------|-----------------------|------------|---------------------------------|------------------------------------|-----------------------------|----------|
| <b>Comb rail KAS</b> |         |                       |            |                                 |                                    |                             |          |
| 680590               | KAS 116 | 16 A                  | 1          | 10                              | 24                                 | 15.20                       | 10       |
| 680591               | KAS 163 | 63 A                  | 1          | 16                              | 32                                 | 17.40                       | 10       |
| 680595               | KAS 316 | 16 A                  | 3          | 10                              | 57                                 | 28.00                       | 10       |
| 680596               | KAS 363 | 63 A                  | 3          | 16                              | 78                                 | 32.00                       | 10       |

Deliverable as 1-phase and 3-phase block

# Mounting accessories and tools

## Spiral band



halogenfree

### Application

- - halogen-free -
- Spiriflex spiral bands - for tying cables, wires and brains to cable trees
- The braids are protected from abrasion and can be branched off at any optional location

### Properties

- Spiriflex spiral bands have good chemical resistance and high abrasion resistance

### Technical data

Temperature range -30 °C – +80 °C

### Design

- Material PE
- Colour natural, black, yellow, white, orange

| Part-No.               | Type        |         | Inner- $\emptyset$<br>mm | Outer- $\emptyset$<br>approx. mm | Strip width<br>mm | bundling range<br>from ... to mm | weight approx.<br>kg/100 piece | shipment<br>VE |
|------------------------|-------------|---------|--------------------------|----------------------------------|-------------------|----------------------------------|--------------------------------|----------------|
| <b>Spiral band SP</b>  |             |         |                          |                                  |                   |                                  |                                |                |
| 680150                 | SP 1        | natural | 1.4                      | 3.0                              | 5                 | 2 – 12                           | 0.50                           | 100 m          |
| 680151                 | SP 2        | natural | 3.8                      | 6.0                              | 8                 | 5 – 50                           | 1.50                           | 100 m          |
| 680153                 | SP 2 sw     | black   | 3.8                      | 6.0                              | 8                 | 5 – 50                           | 1.50                           | 100 m          |
| 680158                 | SP 2 yellow | yellow  | 3.8                      | 6.0                              | 8                 | 5 – 50                           | 1.50                           | 100 m          |
| 680152                 | SP 3        | natural | 10.0                     | 12.7                             | 11                | 10 – 100                         | 4.00                           | 50 m           |
| 680154                 | SP 3 sw     | black   | 10.0                     | 12.7                             | 11                | 10 – 100                         | 4.00                           | 50 m           |
| <b>spiral band SPF</b> |             |         |                          |                                  |                   |                                  |                                |                |
| 680156                 | SPF 2       | white   | 3.8                      | 6.0                              | 8                 | 5 – 50                           | 1.50                           | 100 m          |
| 680157                 | SPF 3       | white   | 10.0                     | 12.7                             | 11                | 10 – 100                         | 4.00                           | 50 m           |
| 680159                 | SPF 3       | orange  | 3.8                      | 6.0                              | 8                 | 5 – 10                           | 1.50                           | 100 m          |

# Mounting accessories and tools

## Cable tie



### Application

- Cable ties – fast and simple installation
- For the bundling, binding and attaching of cables, conductors, braids, wires and conduit. **Non-detachable!**

### Technical data

Temperature range                    -10 °C – +85 °C

### Design

- Material Polyamide KSN = mold-resistant; KSS = UV-resistant
- Colour natural, black

| Part-No.             | Type  | Width<br>mm | bundling range<br>to approx. ... mm Ø | weight approx.<br>kg/100 piece | VE<br>piece |
|----------------------|-------|-------------|---------------------------------------|--------------------------------|-------------|
| <b>cable tie KSN</b> |       |             |                                       |                                |             |
| 680100               | KSN 1 | 2.4         | 18                                    | 0.30                           | 1000        |
| 680101               | KSN 2 | 4.5         | 44                                    | 1.00                           | 1000        |
| 680102               | KSN 3 | 5.0         | 102                                   | 3.00                           | 1000        |
| <b>Cable tie KSS</b> |       |             |                                       |                                |             |
| 680105               | KSS 1 | 2.5         | 18                                    | 0.40                           | 1000        |
| 680106               | KSS 2 | 5.0         | 44                                    | 1.20                           | 1000        |
| 680107               | KSS 3 | 5.0         | 102                                   | 5.50                           | 1000        |
| 680108               | KSS 4 | 2.5         | 55                                    | 0.80                           | 1000        |

# Mounting accessories and tools

## Ribbon tie FCM



### Application

- Redetachable ribbon tie FCM, self-adhesive or screw-on

### Design

- Material Polyamide
- Colour grey

| Part-No.              | Type  | weight approx.<br>kg/100 piece | VE<br>piece |
|-----------------------|-------|--------------------------------|-------------|
| <b>Ribbon tie FCM</b> |       |                                |             |
| 680112                | FCM 2 | 0.11                           | 100         |
| 680113                | FCM 3 | 0.17                           | 50          |

FCM 2: for cable widths up to 2"

FCM 3: for cable widths up to 3"

# Mounting accessories and tools

## Tools



### Application

- Tools for preparing cables

| Part-No.                          | Type  | Description  | Weight kg/piece | VE piece |
|-----------------------------------|-------|--|-----------------|----------|
| <b>Wire stripper AZ 1</b>         |       |  |                 |          |
| 680018                            | AZ 1  | The cutters in the wire stripper AZ 1 are automatically adjusted to the respective conductor gauge. An adjuster mechanism allows for adapting to different insulation thicknesses and hardnesses.<br><b>For cable diameters from 0.08 – 1.0 mm<sup>2</sup></b>   | 0.25            | 1        |
| <b>Wire stripper AZ 2</b>         |       |  |                 |          |
| 680017                            | AZ 2  | The cutters in the wire stripper AZ 2 are automatically adjusted to the respective conductor gauge. An adjuster mechanism allows for adapting to different insulation thicknesses and hardnesses.<br><b>For cable diameters from 0.5 – 4.0 mm<sup>2</sup></b>  | 0.15            | 1        |
| <b>Cable jacket stripper AS 1</b> |       |  |                 |          |
| 680005                            | AS 1  | For easy stripping and cutting of wires and conduit. Especially suitable for shielded cables and conduit.  | 0.09            | 1        |
| <b>Ribbon cable stripper FCS</b>  |       |  |                 |          |
| 680004                            | FCS   | Crimp-free cutting of ribbon cables up to 81.5 mm width. The cutting plate is equipped with a stop bracket for right angle cutting.<br>– Knee-lever transmission of power<br>– Handles and blade holder from high-strength steel, bronzed<br>– Plastic-coated handles, blue<br>– Replaceable cutting surface from fibre glass reinforced plastic<br>– Replaceable blade from hardened special steel  | 0.85            | 1        |
| <b>Shears GS 85</b>               |       |  |                 |          |
| 680021                            | GS 85 | For trimming of plastic parts. This is the indispensable, lightweight, easy-to-use shears for daily work with the LSC system. Precise trimming of comb profiles KP 300, KP 301, wiring profile LV 78, covers of all sizes KD 50, KD 51, adaptor profile, perforated rubber strips, labelling strips etc.<br>– burr -free<br>– easy, non-tiring work with proven cutting principle.   | 0.75            | 1        |
| <b>Cable cutter KS 16</b>         |       |  |                 |          |
| 680020                            | KS 16 | The special blade shape of the cable cutter KS 16 produces a pulling cut and is suitable for wires up to 16 mm outer diameter.   | 0.13            | 1        |
| <b>cable slitting knife KM 1</b>  |       |  |                 |          |
| 680000                            | KM 1  | The ideal knife for removing cable jackets and stripping insulation from multi-strand wires or cables with large cross sections. Automatic conversion of the cutting blade from round to longitudinal cut. Cutting depth of the blade is fully adjustable using the screw in the handle end. Replacement blades in handle. Accessible by loosening the three screws in the handle.<br><b>Suitable for wires and cables from 8 – 25 mm outer diameter</b> | 0.09            | 1        |

# Labelling system

## Multimark marking collars, halogen-free/Multimark marker



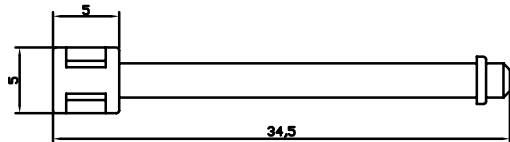
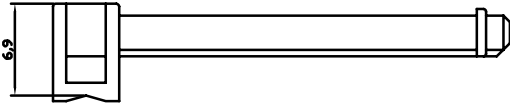
### Application

- For the labelling of wires of the most different cable diameters

| Part-No.  | Length<br>mm | Description   | Colour      | VE<br>piece |
|---|--------------|---|-------------|-------------|
| <b>Multimark, marking sleeves, halogen-free</b> |              |   |             |             |
| 681110  | 18.00        | The Multimark marking collars serve for the labelling of wires. A collar size for cable diameters 1.8 – 4.0 mm. The labelling is done on the Multimark marker which is inserted into the collar.  | transparent | 2200        |
| 681111  | 18.00        | The Multimark marking collars serve for the labelling of wires. A collar size for cable diameters 3.5 – 8.0 mm. The labelling is done on the Multimark marker which is inserted into the collar.  | transparent | 1100        |
| 681112  | 18.00        | The Multimark marking collars serve for the labelling of wires. A collar size for cable diameters 7.5 – 11.0 mm. The labelling is done on the Multimark marker which is inserted into the collar. | transparent | 550         |
| 681113  | 18.00        | The Multimark marking collars serve for the labelling of wires. A collar size for cable diameters 8.5 – 17.0 mm. The labelling is done on the Multimark marker which is inserted into the collar. | transparent | 550         |
| <b>Multimark, marker</b>                        |              |   |             |             |
| 681014  | 18.00        | The Multimark marker is supplied on endless release paper and can be easily applied to the marking collars through the perforation.   | white       | 6.600       |

# Labelling system

## Wire and cable marking



### Application

- This versatile system offers you solutions all of your labelling needs for wires and cables.
- The system consists of marker holders, cable ties and symbols. Eight labelling rings can be snapped onto every label holder
- The non-detachable label with the LÜTZE wire and cable marking system is suitable for individual wires and cables with a diameter of 2 mm to approx. 20 mm, and with our cable ties KSS4
- Available as special accessory, up to a diameter of 55 mm

### Properties

- The label holder is supplied with cable ties

| Part-No. | Type  | VE<br>piece      |
|----------|-------|------------------|
| 681090   | KZT 2 | 500 pieces/pack. |

# Labelling system

## Wire and cable marking



### Application

- Modifications are possible at any time, quickly, easily and without rewiring
- Even labelling closely lying conductors and cables is no problem

### Properties

- The labelling rings are made of soft plastic with indelible black deep embossing

| Part-No.   | Type    | VE piece                           |
|--|---------|------------------------------------|
| <b>Labelling ring for wires with a diameter of 1.9 to 2.65 mm</b>                            |         |                                    |
| 681300   | KR 03 0 | 300 Markers on 10 rods per package |
| 681301   | KR 03 1 | 300 Markers on 10 rods per package |
| 681302   | KR 03 2 | 300 Markers on 10 rods per package |
| 681303   | KR 03 3 | 300 Markers on 10 rods per package |
| 681304   | KR 03 4 | 300 Markers on 10 rods per package |
| 681305   | KR 03 5 | 300 Markers on 10 rods per package |
| 681306   | KR 03 6 | 300 Markers on 10 rods per package |
| 681307   | KR 03 7 | 300 Markers on 10 rods per package |
| 681308   | KR 03 8 | 300 Markers on 10 rods per package |
| 681309   | KR 03 9 | 300 Markers on 10 rods per package |
| 681336   | KR 03 + | 300 Markers on 10 rods per package |
| 681337   | KR 03 - | 300 Markers on 10 rods per package |
| 681338   | KR 03 / | 300 Markers on 10 rods per package |
| 681339   | KR 03 ÷ | 300 Markers on 10 rods per package |
| 681330   | KR 03 U | 300 Markers on 10 rods per package |
| 681331   | KR 03 V | 300 Markers on 10 rods per package |
| 681332   | KR 03 W | 300 Markers on 10 rods per package |
| 681323   | KR 03 N | 300 Markers on 10 rods per package |
| <b>Labelling ring for the label holder and conductors with a diameter from 2.6 to 3.5 mm</b> |         |                                    |
| 681400   | KR 06 0 | 300 Markers on 10 rods per package |
| 681401   | KR 06 1 | 300 Markers on 10 rods per package |
| 681402   | KR 06 2 | 300 Markers on 10 rods per package |
| 681403   | KR 06 3 | 300 Markers on 10 rods per package |
| 681404   | KR 06 4 | 300 Markers on 10 rods per package |
| 681405   | KR 06 5 | 300 Markers on 10 rods per package |
| 681406   | KR 06 6 | 300 Markers on 10 rods per package |
| 681407   | KR 06 7 | 300 Markers on 10 rods per package |
| 681408   | KR 06 8 | 300 Markers on 10 rods per package |
| 681409   | KR 06 9 | 300 Markers on 10 rods per package |
| 681410   | KR 06 A | 300 Markers on 10 rods per package |
| 681411   | KR 06 B | 300 Markers on 10 rods per package |
| 681412   | KR 06 C | 300 Markers on 10 rods per package |
| 681413   | KR 06 D | 300 Markers on 10 rods per package |
| 681414   | KR 06 E | 300 Markers on 10 rods per package |
| 681415   | KR 06 F | 300 Markers on 10 rods per package |
| 681416   | KR 06 G | 300 Markers on 10 rods per package |
| 681417   | KR 06 H | 300 Markers on 10 rods per package |
| 681418   | KR 06 I | 300 Markers on 10 rods per package |
| 681419   | KR 06 J | 300 Markers on 10 rods per package |
| 681420   | KR 06 K | 300 Markers on 10 rods per package |
| 681421   | KR 06 L | 300 Markers on 10 rods per package |
| 681422   | KR 06 M | 300 Markers on 10 rods per package |
| 681423   | KR 06 N | 300 Markers on 10 rods per package |
| 681425   | KR 06 P | 300 Markers on 10 rods per package |
| 681426   | KR 06 Q | 300 Markers on 10 rods per package |
| 681427   | KR 06 R | 300 Markers on 10 rods per package |
| 681428   | KR 06 S | 300 Markers on 10 rods per package |
| 681429   | KR 06 T | 300 Markers on 10 rods per package |
| 681430   | KR 06 U | 300 Markers on 10 rods per package |
| 681431   | KR 06 V | 300 Markers on 10 rods per package |
| 681432   | KR 06 W | 300 Markers on 10 rods per package |
| 681433   | KR 06 X | 300 Markers on 10 rods per package |
| 681434   | KR 06 Y | 300 Markers on 10 rods per package |
| 681435   | KR 06 Z | 300 Markers on 10 rods per package |
| 681436   | KR 06 + | 300 Markers on 10 rods per package |
| 681437   | KR 06 - | 300 Markers on 10 rods per package |
| 681438   | KR 06 / | 300 Markers on 10 rods per package |
| 681439   | KR 06 ÷ | 300 Markers on 10 rods per package |
| 681441   | KR 06 : | 300 Markers on 10 rods per package |

# Labelling system

## Wire and cable marking



### Application

- Modifications are possible at any time, quickly, easily and without rewiring
- Even labelling closely lying conductors and cables is no problem

### Properties

- The labelling rings are made of soft plastic with indelible black deep embossing

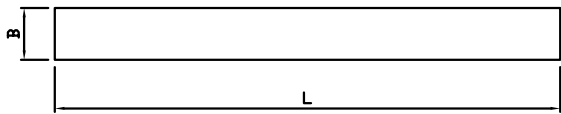
| Part-No.  | Type    | VE piece                           |
|---|---------|------------------------------------|
| <b>Labelling ring for wires with a diameter of 3.25 to 4.5 mm</b> |         |                                    |
| 681500  | KR 09 0 | 300 Markers on 10 rods per package |
| 681501  | KR 09 1 | 300 Markers on 10 rods per package |
| 681502  | KR 09 2 | 300 Markers on 10 rods per package |
| 681503  | KR 09 3 | 300 Markers on 10 rods per package |
| 681504  | KR 09 4 | 300 Markers on 10 rods per package |
| 681505  | KR 09 5 | 300 Markers on 10 rods per package |
| 681506  | KR 09 6 | 300 Markers on 10 rods per package |
| 681507  | KR 09 7 | 300 Markers on 10 rods per package |
| 681508  | KR 09 8 | 300 Markers on 10 rods per package |
| 681509  | KR 09 0 | 300 Markers on 10 rods per package |
| 681536  | KR 09 + | 300 Markers on 10 rods per package |
| 681537  | KR 09 - | 300 Markers on 10 rods per package |
| 681538  | KR 09 / | 300 Markers on 10 rods per package |
| 681539  | KR 09 ÷ | 300 Markers on 10 rods per package |
| 681530  | KR 09 U | 300 Markers on 10 rods per package |
| 681531  | KR 09 V | 300 Markers on 10 rods per package |
| 681532  | KR 09 W | 300 Markers on 10 rods per package |
| 681523  | KR 09 N | 300 Markers on 10 rods per package |

# Labelling system

## Rail for marker holders/marker holder



- Properties**
- System for manual labelling



| Part-No.                           | Type     | Description  | Dimensions mm | VE piece |
|------------------------------------|----------|--|---------------|----------|
| <b>rail for marker holders BTS</b> |          |  |               |          |
| 681314                             | BTS 301  | <p>The <b>rail for marker holders</b> BTS serve as non-detachable marking of the devices.</p> <p>The markers lock in place in the rail for marker holders and are exchangeable. To attach the BTS, peel off the protective foil from the underside adhesive side of the BTS and press on firmly</p> <p>Material: Hard PVC<br/>           Colour: grey<br/>           Burning behaviour: UL-94 V2</p> <p><b>Rail for marker holders</b> for the marker holder BZT 0920</p> <p>Examples from our product range:<br/>           Rail for marker holders Part-No. 330 035<br/>           Rail for marker holders Part-No. 681 314<br/>           MICROCOMPACT<br/>           Valve plug<br/>           DIOFACE<br/>           DIOPLEX<br/>           Actuator sensor boxes</p> | 10×1000 (W×L) | loose    |
| <b>Marker holder BZT</b>           |          |  |               |          |
| 681311                             | BZT 0720 | Suitable for our MICROCOMPACT modules<br>Type series 12.5 mm and Siemens control unit SIRIUS 3 R.  | 7×20 (W×L)    | 100      |
| 681312                             | BZT 0420 | Suitable for our MICROCOMPACT modules<br>Model range 6.2 mm 4-pole enclosure<br>and Siemens interstage networks 3TX7 004/5- M...<br>and Siemens interstage networks 3TX7 004/5-. AB04  | 4×20 (W×L)    | 100      |
| 681313                             | BZT 0411 | Suitable for our MICROCOMPACT modules<br>Model range 6.2 mm 5-pole enclosure<br>and Siemens interstage networks 3TX7 004/5- 1L...  | 4×11 (W×L)    | 100      |
| 681315                             | BZT 0920 | Suitable for all devices with standardised marker holders.<br>(Siemens control units and many more)  | 9×20 (W×L)    | 100      |

# Labelling system

## Identification of hook-up wires and cables



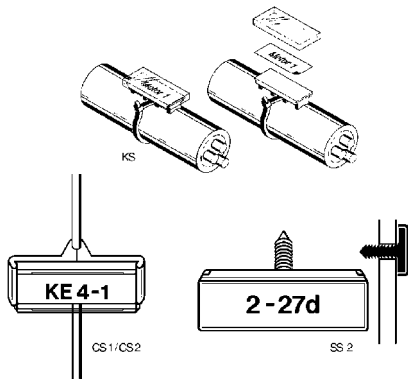
### Technical data

Stability

UV-stable and non-yellowing

### Design

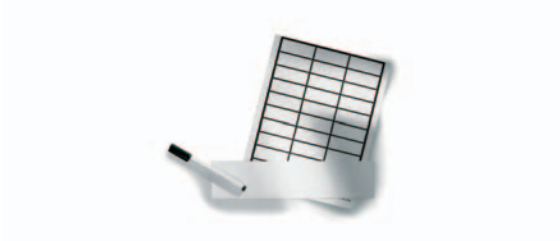
- Material Polypropylene
- Covering cap: Polystyrene



| Part-No.                        | Type | Description  | Dimensions mm | weight approx. kg/100 piece | VE piece |
|---------------------------------|------|--|---------------|-----------------------------|----------|
| <b>Clip-on marker CS 1/CS 2</b> |      |  |               |                             |          |
| 680418                          | CS 1 | For labelling of devices and supply cables after the wiring. Termination area 0.75 to 4.0 mm clip-on markers are supplied with labelling sheets. Labelling sheets for laser printer see system for laser printer labelling.  | 28 × 11       | 0.10                        | 500      |
| 680419                          | CS 2 | For labelling of devices and supply cables after the wiring. Termination area 0.75 to 4.0 mm clip-on markers are supplied with labelling sheets. Labelling sheets for laser printer see system for laser printer labelling.  | 39 × 15.5     | 0.30                        | 500      |
| <b>Cable marker KS 1</b>        |      |  |               |                             |          |
| 681310                          | KS 1 | The cable marker <b>KS 1</b> is designed for the labelling of cables, wires and conduits, pipes etc. in raw, moist and dusty environments. The label with the information is embedded in the cable marker and thus fully protected. The marker is attached using cable ties. Cable markers are supplied with labelling sheets labelling sheets for laser printer see system for laser printer labelling. | 34 × 16       | 0.30                        | 500      |
| <b>Plug-in markers SS 2</b>     |      |  |               |                             |          |
| 680424                          | SS 2 | For the labelling of devices on the mounting panel. Hole 4 mm. Pressing in of the plug-in marker. Securely locked in by plastic lugs. Plug-in markers are supplied with labelling sheets. labelling sheets see system for laser printer labelling.   | 32.0 × 12.0   |                             |          |

# Labelling system

## Sheet labels

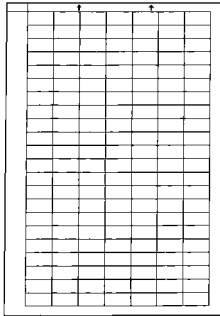


- Application**
- For on-site hand-written labelling
- Properties**
- Labelling sheet

| Part-No.                                  | Type    | Description  | Dimensions<br>mm | Label/Sheet |
|---|---------|--|------------------|-------------|
| <b>Labels on sheets with black border</b> |         |  |                  |             |
| 681003                                    | EB 1119 | For on-site hand-written labelling.<br>Material: PVC impregnated fabric yellow<br>Good adhesive force<br>temperature range: – 30 °C to + 80 °C<br>Sheet size: 200 × 240 mm<br>Resistant to water, sea water, alcohol, motor oil, benzine, methanol | 11 × 19          | 200         |
| 681004                                    | EB 1128 | For on-site hand-written labelling.<br>Material: PVC impregnated fabric yellow<br>Good adhesive force<br>temperature range: – 30 °C to + 80 °C<br>Sheet size: 200 × 240 mm<br>Resistant to water, sea water, alcohol, motor oil, benzine, methanol | 11 × 28          | 120         |
| 681005                                    | EB 1138 | For on-site hand-written labelling.<br>Material: PVC impregnated fabric yellow<br>Good adhesive force<br>temperature range: – 30 °C to + 80 °C<br>Sheet size: 200 × 240 mm<br>Resistant to water, sea water, alcohol, motor oil, benzine, methanol | 11 × 38          | 100         |
| <b>Labels on sheets, endless form</b>     |         |  |                  |             |
| 680428                                    | BS-CS 1 | Labelling sheet  | 20.5 × 9.0       | 360         |
| 680429                                    | BS-CS 2 | Labelling sheet  | 30.3 × 12.8      | 168         |

# Labelling system

## Laser labels



### Application

- For the printing with laser printer
- The high-contrast printing and the high resolution of laser printers set quality standards
- The available border and the appropriate row and column spacing enable the optimal utilisation of the entire labelling field of the self-adhesive labels
- Very high resistance to external influences and very high ageing resistance of the printed image.

### Design

- Material Polyester white matt
- Dimension 0.05 mm

| Part-No.                          | Type        | Description  | Dimensions mm     | Label/Sheet |
|-----------------------------------|-------------|--|-------------------|-------------|
| <b>Laser labels</b>               |             |  |                   |             |
| 681316                            | BSL-CS 1    | Labels for clip on markers CS 1  | 8.5 × 20          | 270         |
| 681318                            | BSL-SS 2    | Labels for identification of hook-up wires and cables CS 2, SS 2 and KS 1.   | 12 × 29           | 138         |
| <b>Self-adhesive laser labels</b> |             |  |                   |             |
| 681031                            | LEB A4 PW   | Labels suitable for:<br>marker holder BZT 0920<br>MINICOMPACT<br>DIOFACE<br>valve plug<br>all devices with standard marker | Sheet non-punched |             |
| 681032                            | LEB 0920 PW | Labels suitable for:<br>marker holder BZT 0920<br>MINICOMPACT<br>DIOFACE<br>valve plug<br>all devices with standard marker | 9 × 20            | 270         |
| 681033                            | LEB 0615 PW | Labels suitable for:<br>marker holder BZT 0720<br>MINICOMPACT modules 12.5 mm<br>Actuator sensor boxes<br>DIOPLEX          | 6.35 × 15.24      | 518         |
| 681034                            | LEB 0411 PW | Labels suitable for:<br>marker holder BZT 0411<br>MICROCOMPACT modules 6.2 mm  | 4.23 × 11         | 1056        |

# Labelling system

## System for laser print labelling



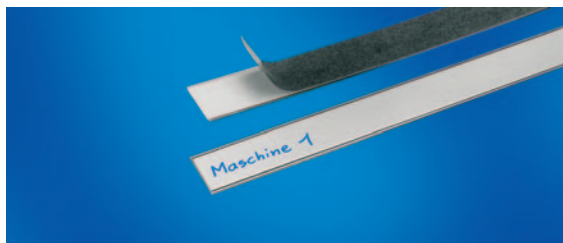
### Application

- For the creation of labels using Windows 95/98, ME, NT, 2000 or XP
- PrintEasy is a powerful, immediately usable application for label design under Windows. Using PrintEasy, texts, graphics and bar codes can be easily combined and output as professional labels. Logically designed menu navigation and WYSIWYG preview allow for fast and accurate design of labels. Print Easy is optimised for the use of the numerous laser print materials and is equipped with all templates for thermotransfer standard labels.
- The film material is thicker as normal paper, thus we recommend the use of the single sheet feed on the laser printer

| Part-No.                          | Type | Packaging unit               |
|-----------------------------------|------|------------------------------|
| <b>Software for laser printer</b> |      |                              |
| 681030                            | ECC4 | Pack = 1 license with manual |

# Labelling system

## Marker strips



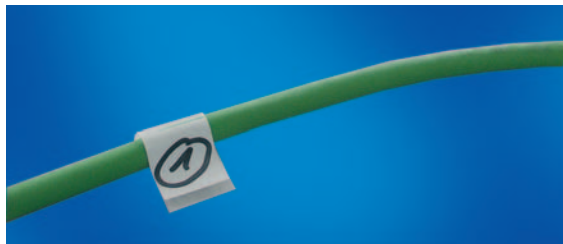
### Application

- Marker strips flexible and self-adhesive
- For the labelling of cable channels, control panels, operator panels . .
- The labelled inserts are protected by a transparent film
- Transparent hard film with exchangeable case strips for self-labelling
- Can be cut to any desired width
- Film and labelling strips are supplied separately

| Part-No.               | Type | Description   | VE<br>piece |
|------------------------|------|---|-------------|
| <b>Marker strip BS</b> |      |   |             |
| 680420                 | BS   | Width × Length: 21.5 mm × 1000 mm<br>max. Labelling surface area: 18.0 mm × 1000 mm | 10          |

# Labelling system

## Cable marker



### Application

- For on-site hand-written labelling
- Blocked in handy sizes

### Properties

- Permanent adhesive strength
- Resistant to dirt, water, alcohol, petroleum-based oils
- Labelling field white

### Technical data

Temperature range                    -30 °C to +120 °C

### Design

- Material PVC transparent
- Dimension 25 × 25 mm

| Part-No.                | Type    | Description                                       | Dimensions<br>mm |
|-------------------------|---------|---|------------------|
| <b>Cable marker TKM</b> |         |   |                  |
| 681001                  | TKM 75  | f. Cable diameter max. 14 mm<br>60 marker/package | 75 × 25          |
| 681002                  | TKM 150 | f. Cable diameter max. 38 mm<br>30 marker/package | 150 × 25         |

# Labelling system

## Wire markers LKZ



### Application

- For labelling of rails, connections or equipment
- For labelling of systems and devices

### Design

- Material self-adhering PVC foil with lamination 0.10 mm strong

| Part-No.                | Type      | Description                        | Diameter mm | Page length mm |
|-------------------------|-----------|------------------------------------|-------------|----------------|
| <b>Wire markers LKZ</b> |           |                                    |             |                |
| 681015                  | LKZ 12.B4 | Ground. 10 markers/card            | 12.5        |                |
| 681016                  | LKZ 12.PE | Ground conductor 10 markers/card   | 12.5        |                |
| 681017                  | LKZ 12.N  | Neutral conductor. 10 markers/card | 12.5        |                |
| <b>Safety sign ESSW</b> |           |                                    |             |                |
| 681008                  | ESSW 1025 | 10 markers/card                    |             | 25             |
| 681009                  | ESSW 1050 | 2 markers/card                     |             | 50             |
| 681010                  | ESSW 1100 | 2 markers/card                     |             | 100            |